



Reliable | High performance

## PEEK tubing

Experts in PEEK extrusion, PEEKsil<sup>®</sup> manufacturing and precision fluidics

Trajan precision bore PEEK tubing is designed specifically for modern LC, LCMS and automation usage. PEEK tubing is a flexible alternative to stainless steel tubing in high pressure applications.

Trajan precision bore PEEK tubing ensures reproducibility in your chromatographic flow rates through smooth internal surface along with consistent and tight toleranced IDs.



**Bio-inert | Bio-compatible**

## PEEK tubing specification chart

OD	ID	Tolerances		Operating temperature (max °C)	Max operating pressure (psi/bar)	Color
		OD	ID			
1/16"	0.0025"	±0.001"	±0.0005"	100°C	7,000 psi (483 bar)	Natural ●
1/16"	0.004"	±0.001"	±0.0005"	100°C	7,000 psi (483 bar)	Black ●
1/16"	0.005"	±0.001"	±0.001"	100°C	7,000 psi (483 bar)	Red ●
1/16"	0.007"	±0.001"	±0.001"	100°C	7,000 psi (483 bar)	Yellow ●
1/16"	0.010"	±0.001"	±0.001"	100°C	7,000 psi (483 bar)	Blue ●
1/16"	0.013"	±0.001"	±0.001"	100°C	7,000 psi (483 bar)	Orange ●
1/16"	0.015"	±0.001"	±0.001"	100°C	7,000 psi (483 bar)	Natural ●
1/16"	0.015"	±0.001"	±0.001"	100°C	7,000 psi (483 bar)	Gray ●
1/16"	0.020"	±0.001"	±0.001"	100°C	6,000 psi (414 bar)	Orange ●
1/16"	0.030"	±0.001"	±0.001"	100°C	4,000 psi (276 bar)	Green ●
1/16"	0.030"	±0.001"	±0.001"	100°C	4,000 psi (276 bar)	Red ●
1/16"	0.040"	±0.001"	±0.001"	100°C	3,000 psi (207 bar)	Natural ●
1/32"	0.0025"	±0.0005"	±0.0005"	100°C	5,000 psi (345 bar)	Natural ●
1/32"	0.004"	±0.0005"	±0.0005"	100°C	5,000 psi (345 bar)	Black ●
1/32"	0.005"	±0.0005"	±0.0005"	100°C	5,000 psi (345 bar)	Red ●
1/32"	0.007"	±0.0005"	±0.0005"	100°C	5,000 psi (345 bar)	Yellow ●
1/32"	0.010"	±0.0005"	±0.0005"	100°C	5,000 psi (345 bar)	Blue ●
1/32"	0.015"	±0.0005"	±0.0005"	100°C	4,000 psi (276 bar)	Natural ●
1/32"	0.015"	±0.0005"	±0.0005"	100°C	4,000 psi (276 bar)	Gray ●
1/32"	0.020"	±0.0005"	±0.0005"	100°C	3,000 psi (207 bar)	Orange ●
360 µm	50 µm (0.002")	±0.0005"	±0.0005"	100°C	5,000 psi (345 bar)	Natural ●
360 µm	75 µm (0.003")	±0.0005"	±0.0005"	100°C	5,000 psi (345 bar)	Black ●
360 µm	100 µm (0.004")	±0.0005"	±0.0005"	100°C	2,000 psi (138 bar)	Red ●
360 µm	125 µm (0.005")	±0.0005"	±0.0005"	100°C	2,000 psi (138 bar)	Green ●
360 µm	150 µm (0.006")	±0.0005"	±0.0005"	100°C	2,000 psi (138 bar)	Yellow ●
1/8"	0.062"	±0.003"	±0.003"	100°C	4,000 psi (276 bar)	Natural ●
1/8"	0.080"	±0.003"	±0.003"	100°C	3,000 psi (207 bar)	Natural ●

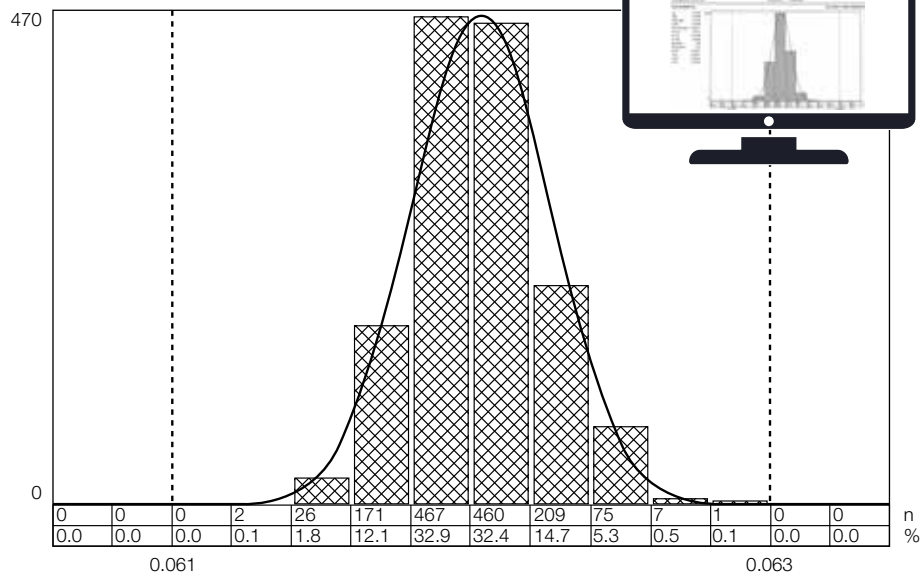
## Specifications

- Operating temperature up to 100°C max continuous use.
- Operating pressure range up to 10,000 psi (690 bar), size dependent.
- Can be used across a broad pH range of 2 to 14.
- Pre-cut lengths of 5', 10', 50' and 100'.

## Real-time online SPC data

Description: PEEK TUBE .062" OD x .020" ID BLUE  
Outer Diameter (in)

Cp: 1.43541  
CpK: 1.39359  
X Bar Bar: 0.0620  
R Bar: 0.0005  
Std. Deviation: 0.00023  
X UCL: 0.0622  
X LCL: 0.0619  
R UCL: 0.0009  
Samples: 1420  
Subgroups: 142  
X+2σ: 0.06249  
X-2σ: 0.06156  
X+3σ: 0.06273  
X-3σ: 0.06133



## Features and benefits

- Excellent chemical resistance and inert to most commonly used solvents. Exceptions are very caustic reagents, strong acids and bases.
- Bio-inert and bio-compatible.
- Color coded to industry standards for easy identification of internal diameter.
- Leach free colorants.
- Smooth inner walls and precise IDs.
- Works well with both polymer or stainless steel fittings.
- Can be formed to specific customer needs.



## Connecting PEEK tubing

Precision engineered to make stronger, more reliable connections within the instrument workflow

Trajan can accurately cut your PEEK tubing to precise lengths to eliminate seating issues, dead volume and leaks in the critical interfaces of your instrument such as sample introduction, columns, valves and detectors.

Trajan's range of connection solutions for PEEK tubing extends to:

- Traditional PEEK Fingertight options.
- ProteCol® stainless connectors to join tubing of different ODs and IDs together.
- PEEKLok™ fittings:
  - designed to minimize dead volume
  - improve performance at higher pressures
  - simplify port configurations with less crowding

Trajan's expertise in PEEK extrusion enables us to produce custom dimensions and sizes.

Our expertise also enables rapid turnaround time.



Visit us at [www.analyticalcolumns.com](http://www.analyticalcolumns.com) or contact us for assistance and further information.

Made in USA

**Analytical Columns**  
**Unit 7, Addington Business Centre**  
**Vulcan Way, New Addington**  
**Croydon, CR0 9UG**

**Tel: +44(0)1689 842736**

**Fax: +44(0)1689 800199**

**Email: [analytical@btconnect.com](mailto:analytical@btconnect.com)**

